

CT DEEP **2017**
FISHING REPORT NUMBER 16
7/27/2017



Blue Crab (*Callinectes sapidus*)



YOU CAN FIND US DIRECTLY ON FACEBOOK. This page features a variety of information on fishing, hunting, and wildlife watching in Connecticut. The address is www.facebook.com/CTFishandWildlife.

SHARE THE EXPERIENCE
Take someone fishing

INLAND REPORT

LARGEMOUTH BASS fishing continues to be good. Places to try include Congamond Lakes (good night action with a number of fish around 3 lbs, fair to good in the day), Lake Saltonstall, Lake McDonough, Highland Lake, Winchester Lake, Bantam Lake, Candlewood Lake (work the edge habitat), Ball Pond, Lake Wononskopomuc, Highland Lake (good, catches included a 7.5 lb beast), Batterson Park Pond, Black Pond (Meriden), Beseck Lake (some nice action reported), Lake Lillinonah, Stillwater Pond, Griggs Pond, Lake Waramaug, West Hill Pond, Park Pond, Winchester Lake, Squantz Pond, Wood Creek Pond, Pachaug Pond, Breakneck Pond (great hike in location), Crystal Lake (Ellington), Quaddick Lake, Gardner Lake, Moodus Reservoir, Quonnipaug Lake, Silver Lake (Meriden) and Halls Pond.

Tournament angler reports are from Aspinook Pond (fair, 3.12 lb lunger), Beseck Lake (fair action, 3.76 lb lunger), Lake of Isles (fair, with a 4.43 lb lunger), Mansfield Hollow Reservoir (fair to good for an late afternoon-evening tournament with a 4.13 lb lunger, fair a day tourney with a 3.3 lb lunger), Pachaug Pond (good fishing for one club with a 4.47 lb lunger, slow for two other clubs with 3.37 lb and 2.63 lb lunkers), Candlewood Lake (fair, 3.39 lb lunger), East Twin Lake (fair fishing, 4.55 lb lunger), Lake Lillinonah (fair to good action for one club), Connecticut River (launched from Salmon River -very good fishing for one club with lots of limits, all anglers got at least 10 lbs of fish with a 5.56 lb lunger and an average fish weight of over 2.3 lbs apiece, fair to good for an earlier club, with a 4.02 lb lunger).

SMALLMOUTH BASS Remains slow in many lakes and ponds, but action is being found with the best reports from Candlewood Lake (they're starting to move to deeper spots around humps), Highland Lake, Lake Lillinonah and Colebrook River Lake. Fishing for river smallmouth was good in the Housatonic River (flyfishing with a popper) and the Connecticut River (try the suffield/Enfield area). **Tournament angler** reports are from Aspinook Pond (few), Pachaug Pond (some caught), Candlewood Lake (fair, 3.6 lb

SATURDAY, AUGUST 12, is a

FREE FISHING LICENSE DAY

The second 2017 (and final) Free Fishing License Day is Saturday, **August 12, 2017** (and also the day of the NCLI/DEEP CARE program Saltwater fishing event at Fort Trumbull State Park – see page 7 for more information on this event).

Anyone can obtain a free one-day fishing license to fish this day.

The free 1-day license can be obtained through our mobile friendly site at

www.ct.gov/deep/sportsmenlicensing and at the same vendors ([Designated vendor \(tackle shop\)](#), Town Halls and DEEP offices where other licenses are available ([DEEP Offices](#)).

lunker), Lake Lillinonah (some “successful” fishing, with several smallies over 3 lbs each and a 4.13 lb lunker), and the Connecticut River (some action on smallmouth)

WALLEYE fishing is slow. Locations to try include Squantz Pond, Batterson Park Pond, Beach Pond, Cedar Lake, Gardner Lake, West Thompson Lake, Mount Tom Pond, and Mashapaug Lake.

NORTHERN PIKE. Reports are picking up with Bantam Lake, Lake Lillinonah, and Pachaug Pond giving up some beautiful fish. Other places for pike include Mansfield Hollow Reservoir, Quaddick Lake (try up in Stump Pond), Hopeville Pond, the Connecticut River, the Housatonic River (Bulls Bridge area), and Winchester Lake. Weedlines early and late in the day typically hold pike.

CHAIN PICKEREL continue to bite in a number of places throughout the state.

PANFISH Fishing the shallows with bobbers and worms, grubs or small shiners is making many young anglers happy (and interested. Try small fly rods. Many of your local small ponds can provide great action. Larger waters to try include Mono Pond, Mohegan Park Pond, Morey Pond, Mudge Pond, Norwich Pond, Pachaug Pond, Page Park Lagoon (very good), Peck Pond, Quaddick Reservoir, Zemko Pond, Wood Creek Pond, Park Pond and Stanley Quarter Pond. **Black Crappie** are being caught in a number of areas including Candlewood Lake (try at around 18 feet) and Beseck Lake. Check out and download the FREE- CARE “Let’s Go Fishing” Workbook available on the DEEP website at www.ct.gov/deep/care.

KOKANEE have been spotty at both East Twin Lake (mostly 12 inch fish with some 14 inchers) and West Hill Pond. Try Beads, Mooselook Wobblers, DB Smelt, and Flash King lures (blue & silver); or fishing corn over lights at night.

TROUT- RIVERS & STREAMS. Conditions for the weekend remain good for this time of year. Water temperatures remain generally moderate, flows continue to be more than adequate (at or above typical early July levels in most areas, especially in eastern CT – see *stream flow graphic on page 6*) thanks to the passing rains than pass through the state. Still some quality fish in many rivers (although you have to put your time in and cover some ground). The Norwalk River, Mill River-(Fairfield), Shepaug River, Natchaug River, Salmon River and Willimantic River are places to try.

Farmington River – Fishing has been very good and should continue to be very good for the weekend and

**REMINDER TO ANGLERS-
FISHING IN OR CASTING INTO
PERMITTED SWIM AREAS IS
PROHIBITED.**

State regulations prohibit fishing in or into a swim area that has been permitted by DEEP. Additionally, vessels cannot be operated within a permitted swim area, and there’s a 100 foot “no-wake” zone around the perimeter. Swim areas that have been permitted by DEEP will be marked by white buoys with orange markings, and there should be a permit number posted on the buoys. They may or may not have small orange barrier floats to further demarcate the area. Should questions arise concerning the validity of the swim area (*no permit numbers or the area appears to have been changed/enlarged or keeps moving*), please contact DEEP’s Boating Division at 860-434-8638.



ZEBRA MUSSELS REMINDER

Zebra mussels are now found in a number of locations scattered throughout the Housatonic River and its impoundments including Lake Lillinonah (since 2010), Lake Zoar (since 2010) and Lake Housatonic (since 2011).

Prior to their discovery in Lakes Lillinonah and Zoar in 2010, zebra mussels had been found (1998) in CT only in East Twin Lake and West Twin Lake (Salisbury). Anglers fishing in any of these waters and western Connecticut in general **should use extra care to avoid transporting water, aquatic vegetation, and possibly zebra mussels to new locations.** Information

For more information including precautions that should be taken to prevent the spread of zebra mussels to additional waters, visit www.ct.gov/deep/invasivespecies or the Aquatic Invasive species section of the 2017 CT angler’s Guide (www.ct.gov/deep/anglersguide).



next week. Large Browns and Rainbows are being posted daily – this place can't be beat. West Branch flows are clear, moderate and quite fishable (currently 281 CFS at Riverton, with the Still River adding 32 CFS) and water temperatures continue to range from the mid 50's °F below the dam to the mid 60's °F through New Hartford.

Rock Snot is still "blooming". *Cymbella janischii* is a close relative of Didymo and has been introduced to the West Branch Farmington River (first noticed in 2011). *C. janischii* is native to the Pacific Northwest and not naturally found on the Eastern seaboard.

Currently this type of "Rock Snot" is very abundant and should continue to grow through July. The primary area of the river is from New Hartford upstream to Riverton. Note: Didymo is still present primarily in the West Branch above the Still River in Riverton. To help prevent the spread to other rivers and streams, all anglers should take extra care to clean and dry waders that have been in contact with rock snot. **We recommend having a pair just for use only in the Farmington River.**

Hatches/patterns include Isonychia (#10-12, now throughout the river, try faster water late afternoon/early evening, also some 12-14 upstream as far as riverton), Caddis (#18-24, good all day), Cahill & Light Cahill (#12-14), March Brown nymphs (#10-12), Blue Wing Olives (#18-20), Sulphur, (*Epeorus vitreus* duns #16-18, afternoon to early evening for spinners), and Midges (#20-32, morning). Try some terrestrials throughout the day. A lot of success mornings is being found below the surface on nymphs, wets and streamers.

Housatonic River – fishing has been good and conditions for the weekend should be very good again. Flows are clear and just continue to hover around the typical levels for mid-July, currently 376 CFS at Falls Village and 453 CFS at Gaylordsville) and are just perfect for wading. Morning water temperatures are now in the upper 60's °F. With water temperatures likely rising again next week, it's a good time to go for Smallmouth, Pike, Fallfish, and Carp, they're on fire hitting a variety of poppers and streamers.

Hatches/patterns include Alder/Zebra Caddis (#8-10, Alder flies are very active during hot days), Sulphurs (#14-18, evening), Blue Wing Olive (#16-18, cloudy



Rock snot continues to bloom. Above is *Cymbella janischii* (rock snot) as observed on June 14, 2017 in the Barkhamsted portion of the West Branch Farmington River (see Notes & Notices for more information).

NO FISHING

WITHIN 100 FEET OF THIS SIGN

JUNE 15- SEPTEMBER 15



Connecticut Department of Energy & Environmental Protection
Bureau of Natural Resources - Inland Fisheries Division
www.ct.gov/deep/fishin

To Report Fishing Violations
Call: 1-800-842-4357

Anglers are reminded that the thermal refuge areas on the Housatonic, Naugatuck and Shetucket Rivers are now closed to fishing (as of June 15). These areas will reopen on September 15. There is no fishing within 100 feet of signs indicating such closure at or near the mouths of tributaries to these rivers.

days, early morning; spinner fall in evening), *Isonychia* (#10-12 late afternoon & evening, just starting), Light Cahill (#12-14, evenings), Adams (#12-16, evening), March Brown (#10-12, afternoon) and Gray Foxes (#14-16). Black Caddis, and Green caddis (#16-18, early morning & evening). Streamers fishing and nymphing with big stoneflies have been very productive.

TROUT-LAKES & PONDS Summer trout fishing is generally slow with few reports of good days.

CONNECTICUT RIVER. The river continues to be comfortable for fishing and boating. Flows continue just enough above typical levels to ease boat access to those hard to get into places, but have become more turbid again. **STRIPED BASS** are hanging out near the mouth (with schools of bunker - lots) and good action can be found from shore at the DEEP Old Lyme boardwalk or by launching a kayak from [Great Island Launch](#) in Old Lyme. **CATFISH** (up to and over 10 pounds) are being caught throughout the river. We recommend using some really stinky bait. Set up just upstream of a deep "hole". **CARP** are very active but anglers are finding them a bit harder to catch this week. **SMALLMOUTH BASS** are putting on a good show in the northern part of the River. Good reports from the where Stony Brook flows into the river, also around Kings Island. Try top water plugs and 4 inch Mr. Twisters, and Wacky Style salted worms in motor oil or chartreuse for these feisty jumpers. Good reports for **LARGEMOUTH BASS**, especially around the Salmon River. **NORTHERN PIKE** are being caught with several good reports from the Salmon River Cove and Haddam Meadows area. Look for pike to be around the weedlines in search of shiners and other bait.

NOTES & NOTICES:

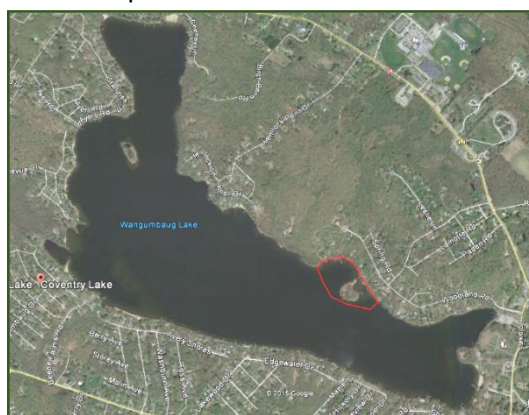
BRANFORD RIVER (boat launch). The Branford River state boat launch will reopen to boating use on this Saturday, July 29.

CANDLEWOOD LAKE. A family oriented Waterski competition will be held Monday, July 31 from 17:00 am to 6:00 pm in New Fairfield Bay area (Candlewood Isle/Candlewood Knoll) Boaters should use caution in this area.

CONNECTICUT RIVER (invasive species alert). Hydrilla was recently found in the main stem Connecticut River in Glastonbury (near Glastonbury's Riverfront Park & Boathouse). See the Coventry Lake entry below for what river users should do to prevent spread of this invasive plant to other waterbodies.

COVENTRY LAKE (invasive species alert). Hydrilla, a very highly invasive aquatic plant, has been found growing in Coventry Lake. All lake users should take extra care to check and clean their boats (including canoes, kayaks and rowing sculls), trailers, and fishing equipment before leaving the boat launch, or leaving the lakeshore.

Coventry Lake (Wangumbaug Lake) boaters should avoid the area outlined in red to avoid fragmenting and spreading hydrilla. This is only area in the lake where hydrilla has been found.



WEST BRANCH FARMINGTON RIVER (invasive species alert). *Cymbella janischii* is a close relative of *Didymo* and has been introduced to the West Branch Farmington River (first noticed in 2011). *C. janischii* is native to the Pacific Northwest and not naturally found on the Eastern seaboard. Currently this type of "Rock Snot" is very abundant and should continue to grow through July. The primary area of the river is from New Hartford upstream to Riverton. Note: *Didymo* is still present primarily in the West Branch above the Still River in Riverton. To help prevent the spread to other rivers and streams, all

anglers should take extra care to clean and dry waders that have been in contact with rock snot. We recommend having a pair just for use only in the Farmington River.

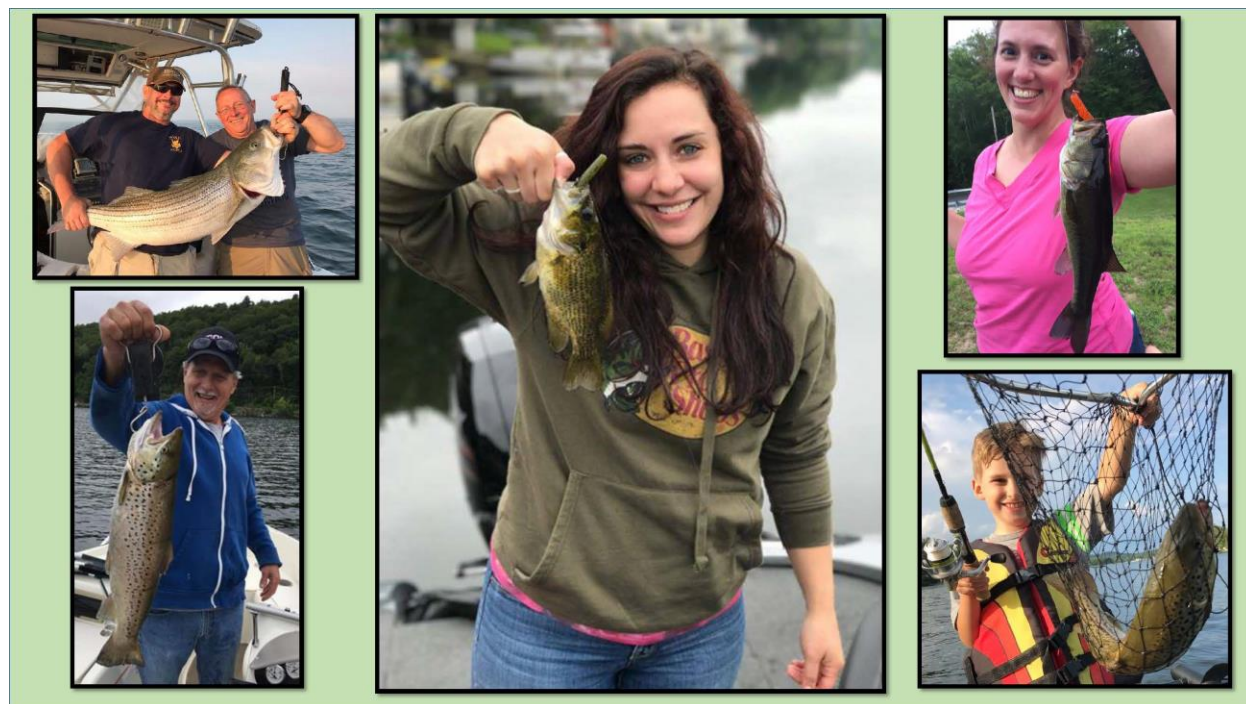
PHOTO CONTEST: Do you have the next Angler's Guide cover shot? Email us your high quality (high resolution) photos at Deep.inland.fisheries@ct.gov and include [photo contest](#) in the subject line.

Youth Fishing Passport [Fishing Challenge Scorecard](#): Download the new scorecard for your Youth Fishing Passport Holder on the program web page at www.ct.gov/deep/yfp. Top anglers will receive a great prize pack of fishing gear.

CT FISHIN' TIPS is our monthly e-newsletter dedicated to providing information, tips and pointers about fishing in Connecticut. Get CT Fishin' Tips delivered automatically to your in box by subscribing at www.ct.gov/deep/newslettersubscription

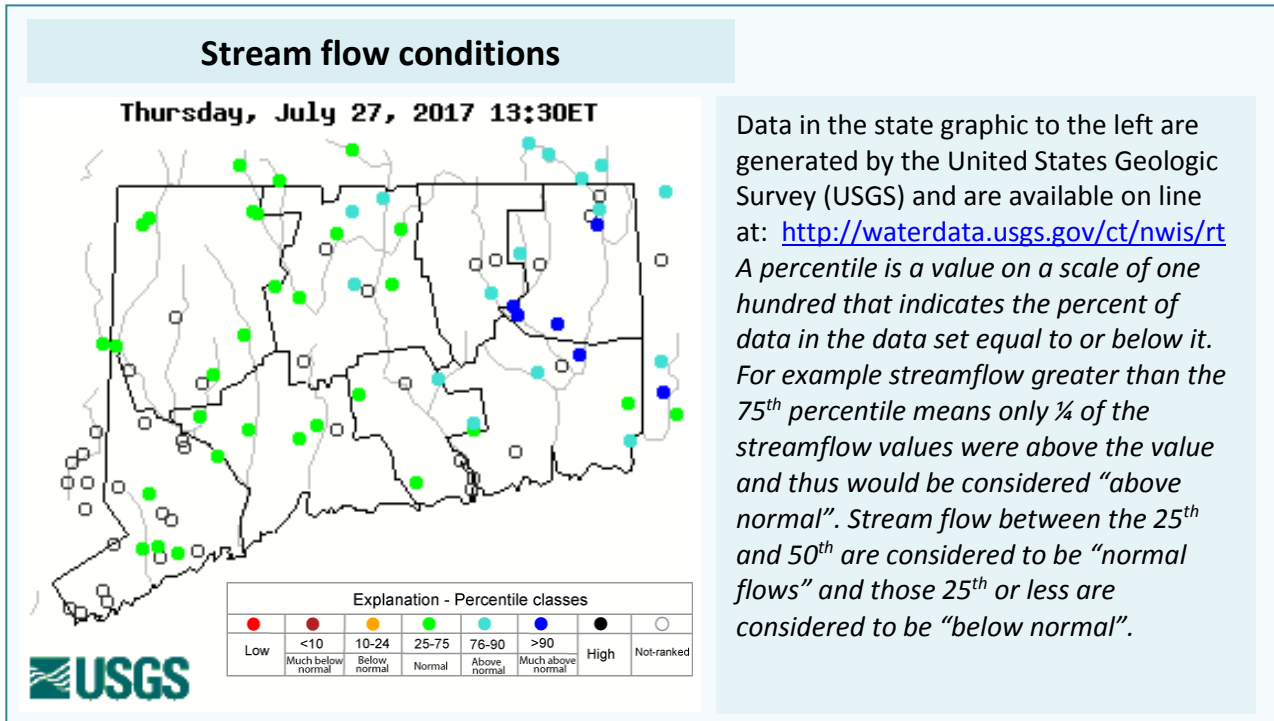
COVER SHOT you have until November 1 to send us your entry for the 2018 Angler's Guide Cover contest. Email your entry to deep.inland.fisheries@ct.gov (attn: cover contest). Complete details on the [web](#).

FACEBOOK FISH OF THE WEEK:



TJ Persons and Dad with a solid Striped Bass, Michael Pellegrini and a chunky Brown Trout, Carl Lovisolo sent us a shot with a happy angler and a Rock Bass, Matt Kennedy sent us the shot of a nice largemouth (caught on the same day as she purchased her fishing license), and Carolyn Malloney sends us a happy boy with a super Brown Trout. We would love to feature you here, simply post your catch to www.Facebook.com/ctfishandwildlife

The Connecticut Department of Energy and Environmental Protection is an Affirmative Action/Equal Opportunity Employer that is committed to complying with the requirements of the Americans with Disabilities Act. Please contact us at (860) 418-5910 or deep.accommodations@ct.gov if you have a disability and need a communication aid or service; have limited proficiency in English and may need information in another language; or if you wish to file an ADA or Title VI discrimination complaint.



Data in the state graphic to the left are generated by the United States Geologic Survey (USGS) and are available on line at: <http://waterdata.usgs.gov/ct/nwis/rt> A percentile is a value on a scale of one hundred that indicates the percent of data in the data set equal to or below it. For example streamflow greater than the 75th percentile means only ¼ of the streamflow values were above the value and thus would be considered “above normal”. Stream flow between the 25th and 50th are considered to be “normal flows” and those 25th or less are considered to be “below normal”.

Attention: OUTDOOR GROUPS/CLUBS/BUSINESSES.

DEEP would like to invite you to attend our upcoming **Hunting and Fishing Day**, September 23, 2017 at Cabela’s in East Hartford, CT from 10 am to 4 pm.

There is no charge for the event and you can showcase your group, business, organization with a tabletop display.

If you are interested in attending, please contact Andrew Labonte at landrew.labonte@ct.gov.

For more information on the event go to: www.ct.gov/deep/huntfishday.

Attention Anglers: PROPOSED CHANGES TO INLAND FISHERIES REGULATIONS.

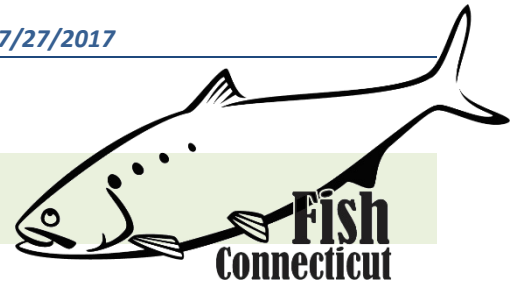
DEEP’s Fisheries Division is currently proposing to make changes to the Inland sport fishing regulations and to establish trout and salmon stamps.

The proposed changes to the regulations will establish trout and Atlantic salmon stamps, and amend regulations concerning methods and gear types, fishing seasons for several waterbodies, harvest regulations for certain species (common carp, catfish and bullheads), Trout Management Areas, Wild Trout Management Areas, Atlantic Salmon “Broodstock Areas,” Trout Parks, and Trophy Carp Waters.

DEEP’s proposed changes to Inland Fisheries Regulations (effective 2018) are currently open for public comment until 4:30 pm on August 25, 2017. A public hearing is also scheduled for August 9, 2017 starting at 6:30 pmat DEEP Headquarters, 79 Elm Street, Hartford.

For more information on proposed changes, how to comment on them and the public hearing, go to Connecticut’s “eRegulations” system at <https://eregulations.ct.gov> or contact the Fisheries Division at Deep.inland.fisheries@ct.gov or by phone at 860-424-3474.

MARINE FISHING REPORT



Surface water temperatures in Long Island Sound (LIS) are in the low 70 °F. Check out the following web sites for more detailed water temperatures and marine boating conditions:

<http://www.mysound.uconn.edu/stationstat.html>

http://marine.rutgers.edu/mrs/sat_data/?nothumbs=1

<http://www.ndbc.noaa.gov/>

<http://www.wunderground.com/MAR/AN/330.html>

Saltwater Fishing at Fort Trumbull State Park

Saltwater Fishing Event: Our annual [CARE](#) and [No Child Left Inside](#) Summer Fishing Event will be held on Saturday, August 12, 2017 (coinciding with free fishing license day). The event will be at [Fort Trumbull State Park](#) from 10 am to 3 pm. Feel free to bring your own fishing gear or you can borrow ours. We will have bait too! A great time will be had by all.

[Youth Fishing Passport](#) holders- This is a great chance for you to “check off” several of the saltwater species on the [“Fishing Challenge Scorecard”](#).

SEE A TANGLED TURTLE? CALL THE HOTLINE: 1-860-572-5955 ext. 107. This is the time of year when leatherback, loggerhead, green, and Kemp’s ridley sea turtles return to northern waters, with many sightings around Long Island Sound.

LICENSE RECIPROcity & CT RESIDENTS: Anglers please note: Although Connecticut has reciprocity with neighboring states (New York, Rhode Island, Maine and Massachusetts), residents of Connecticut are required to have a CT Resident Marine Waters or all-Waters Sport Fishing License to fish in the Marine District.

STRIPED BASS fishing continues to be good throughout the Sound (54 inch bass caught in the West Haven area). Fishing is also good in the lower tidal rivers especially at dawn. Try fishing from sundown to sunrise for trophy-sized “cow” stripers. Casting swimming lures, surface poppers, and bouncing jigs off the bottom in the shallows at low light has been productive. Also, live lining bunker (Atlantic menhaden), hickory shad or scup on the reefs has been effective on “cow” bass. Bunker (Atlantic menhaden) schools are in the major tidal rivers and harbors with stripers following close behind. Look for hovering or diving ospreys which is an indication of bunker (menhaden) schools. The usual striper spots include the Watch Hill reefs, Ram Island Reef in Fishers Island Sound, lower Mystic and Thames River, the Race, Sluiceway, Plum Gut, Pigeon Rip, outer Bartlett Reef, Black Point, the “humps” south of Hatchett Reef, lower Connecticut River, Long Sand Shoal, Cornfield Point, Southwest Reef (outer), Sixmile Reef, Falkner Island area, the reefs off Branford, New Haven Harbor and the upper reaches, Charles Island area, lower Housatonic River, buoys 18 and 20 off Stratford Point, Stratford Shoal/Middle Ground, Penfield Reef, around the Norwalk Islands, and Cable and Anchor Reef.

SUMMER FLOUNDER (fluke) fishing is good with fish measuring in the mid to high 20 inch range being reported. Summer flounder spots include the south shore of Fishers Island (Isabella Beach, Wilderness Point), Napatree Point and along the beach, off the Stonington breakwater, mouth of the Mystic River over to Groton Long Point, Twotree Island Channel, Black Point/Niantic Bay including the Bloody Grounds, Sound View Beach, Long Sand Shoal, Falkner Island area, New Haven Harbor, off the mouth of

the Housatonic River during the flood tide, and around the Norwalk Islands. **Minimum size is 19 inches and the daily creel limit is 3 fish per person.** [CT Bait & Tackleshop List](#)

BLACK SEA BASS fishing is fantastic. The hot spot continues to be Falkner Island/Guilford/Branford Beacon/Stratford Shoal. Fishing over deep water structure/cobble/gravel in 80 to 120 ft around slack tide will produce some trophy-sized “humpbacks on baited jigs or gulp. It’s important to continue to move from structure to structure and fish around slack tide (stay close to the bottom) to find these beautiful and awesome eating fish.

SCUP (porgy) fishing is very good. “Reef Slammers” measuring 14-18 inches (“hubcap size”) in length being reported at every fishing pier, reef or rock pile in the Sound (They are everywhere...go out enjoy the fast paced action). Try Gardners Island, Milford (Charles Island), Montauk and Niantic (Bartletts and Hatchetts Reef). Porgy fishing has also been reported at these very accessible shore fishing locations: Calf Pasture beach, Jennings and Penfield beach, Seaside Park, (Milford), Bradley Point Park (West Haven), New Haven, **Harkness State Park**, Rocky Neck State Park, **Kimberley Reef (Guilford)**, Meigs Point Hammonasset State Park and **Fort Trumbull State Park**. Locate your favorite [Enhanced Shore Fishing Opportunities](#) for these hard fighting and excellent eating “Reef Slammers”. These “panfish of the sea” are easily caught on sandworms/cut squid or any other small piece of bait. Contact your [local bait and tackleshop](#) for updated fishing information.

BLUEFISH fishing has improved on the major reefs and rip areas. Vertical jigging diamond jigs in deep water locations and using fresh bunker chunk baits on three way rigs in shallow water has been the ticket. Typical bluefish fishing spots include the reefs off Watch Hill, the Race, Thames River, Sluiceway, Plum Gut, Pigeon Rip, lower Connecticut River (CT DEEP Headquarters Fishing Pier), Long Sand Shoal, Sixmile Reef, Falkner Island area, New Haven Harbor and upper reaches, lower Housatonic River, buoys 18 and 20 off Stratford Point, Stratford Shoal/Middleground, Penfield Reef, and Cable and Anchor Reef. **SNAPPER** fishing is improving in the tidal creeks and rivers. The DEEP Marine Headquarters fishing pier and Fort Trumbull fishing pier are two great spots to bring kids fishing & crabbing. Look for the schools of “peanut” bunker and you will find the snappers.

BLACKFISH (TAUTOG) fishing is good...give it a try. There are plenty of these “Reef Bullies” around the local reefs and pilings. The daily creel limit is 2 fish per person and the minimum size is 16 inches. Tautog love eating crabs and mussels...try green, Asian and hermit crabs for bait. Look for “Togs” over shellfish beds, pilings with mussel beds and rock (reef) piles (10 to 45 ft). **The daily creel limit is 2 fish per person and the minimum size is 16 inches.**

BLUE CRAB fishing is finally improving in the tidal creeks. Time to get out and try your favorite spot and enjoy the scenery and catch some crabs for dinner (crab cakes) **Remember... all egg bearing females must be released without avoidable injury.** Minimum carapace length is 5 inches for a hard shell crab. Please contact your local bait and tackle shop for most updated information (local hot spots), legal crab traps and bait to use for your fun-filled crabbing. Legal gear types include: scoop (dip) net, hand line, star crab trap, circular (topless) trap not exceeding 26 inches in diameter. Maryland Style crab traps are prohibited. **Chicken with the skin on it (along with a long handle net) is the preferred method to capture these tasty crabs.** [Blue Crab Fact Sheet](#)

DEEP WEEKLY Fishing Report



**Connecticut Department of
ENERGY & ENVIRONMENTAL PROTECTION**

79 Elm Street, Hartford, CT 06106

www.ct.gov/deep